

# NFE Technologies

---



## Statement of Qualifications

### **NFE Technologies, Inc.**

Consulting Engineers, Environmental Scientists & Construction Managers  
250 Dominion Drive / Morrisville (RTP), NC 27560



*NFE Technologies, Inc. - Your Partner to Success*

Last update on 01.16.04

# Corporate Profile

---



Nature:	Consulting Engineers, Scientists, Construction Managers
Established:	1971 in Maryland as National Foundation Engineering
Expansion & Diversification:	1992 as NFE Technologies, Inc.
Total Experience:	30+ Years / 5000+ Projects
Qualifications:	Professional Engineering Corporation <b>Approved on GSA Schedule (SIN 899)</b>
Certification:	<b>8(a) SB, and SDB</b>
Geographical Domain:	Eastern USA
Project Field Offices:	NC, SC, VA, DC, MD, PA, OH, WV.
Staff:	25-35
IT Services:	Up-to-date on IT and online communication
Others	Environmental Remediation, Site cleanup

*NFE Technologies, Inc. - Your Partner to Success*

# Corporate Profile



NFE Technologies, Inc., is a professional consulting engineering firm with headquarters in RTP, North Carolina and field offices in NC, VA, MD, and SC. NFE Technologies, Inc. is certified 8(a) by U.S. SBA. NFE Technologies, Inc. is an outgrowth of National Foundation Engineering, founded in 1971 in Maryland. NFE Companies during the past 30+ years have successfully completed over 5,000 projects, all over the eastern USA. A majority of work lies with the public sector such as DoD bases, Federal Prisons, Federal and State highways & tunnels, Airport authorities, DOI, GSA, Healthcare, Local governments, universities, housing complex, landfills, industrial plants, water and wastewater treatment plants, and recreational parks.

Areas of expertise include:

1. **Environmental and Geotechnical Services:** subsurface investigations and environmental investigations, design and remedial action.
2. **A-E Design:** Civil Engineering Planning and Design, Structural Engineering, Building designs and interior fit-up, and specialty structures.
3. **Construction Management:** Construction engineering, construction inspection, QA/QC materials testing, scheduling, documentation, pay requests, claim resolution, record drawings, punch list, project close-out, and expert testimony.
4. **Information Technology:** Computer hardware, software, AutoCAD, Web design, staffing support.

NFE is equipped and staffed to perform these services. NFE's staff includes highly qualified and experienced civil, environmental, structural, geotechnical, computer, and construction engineers, scientists, industrial hygienists, safety professionals, estimators, construction managers/inspectors and technicians, geologists, and well drillers. Most of the staff have obtained required licenses or certification for design, construction engineering services.

NFE is fiscally sound and financially able to handle projects within \$100 million size. NFE by using its field offices can cost effectively and efficiently perform services nationwide.

Since its establishment, NFE has dedicated itself to providing *superior* quality professional design and construction engineering services. The firm is committed to quality, from the President on down. We target our assignments to be completed within reasonable budgets and schedules. We communicate with our clients regularly to meet and exceed their requirements. Our management remains continuously and intimately involved in each project from inception through completion. One of our Principals is always assigned to each project. We believe in a sound beginning and happy ending on each project and are motivated towards the goal of "Success through Quality and Responsiveness".

# Organizational Chart



**NFE TECHNOLOGIES, Inc.**  
**Vinod K. Goel, PhD, PE, GC**  
President

**Planning & Design**  
**Vibha Goel**  
**Min Hsu, PE**

Site Evaluation  
Facility Planning  
Design Development  
Plans & Specifications  
Cost Estimates  
Construction Administration  
As-Built Plans  
Space Planning

**Environmental Engineering**  
**H. William Boyd, Ph.D., PG, IH**  
**Robert Herrick, CIH, PE**

Site Assessments Phase I, II, III  
Hazardous Materials Management  
Regulatory Compliance  
UST, Groundwater and Soil Remediation  
Asbestos, Lead, Mold, & Air Quality Surveys  
Corrective Action Plans & Site Closures  
Wetlands Investigations  
Landfill Closures & Soil-gas Surveys

**Geotechnical Engineering**  
**Michael Babuin, PhD, PG**  
**Ron Crowson, PhD, PG**  
**David Willmott, PE**

Geotechnical Investigation  
Geological Studies  
Geophysical Surveys  
Groundwater Modeling  
Nondestructive Tests  
Instrumentation  
Laboratory Analysis  
Soil Stabilization  
Foundation Design  
Pavements & Retaining Wall  
Dams & Special Structures

**Construction Management**  
**Bas Sengupta, MSCE**  
**Tony Campos**

Program Management  
Construction Management  
Design-Build Management  
Permits & Approvals  
Construction Engineering  
Quality Control  
Claims Resolution  
Project Close-out  
Operation & Maintenance

**Information Technology**  
**Raymond Reynolds**  
**Rahul Sarin**

IT Consulting  
Web Development and Hosting  
Network Management & Support  
CaD Drawings  
IT Training  
Internet & Network Securities  
Database Support

Architecture, PME, land surveying is performed by outside consultants.



# NFE Philosophy

*“We Strive for Excellence”*

By providing:

- Personal attention to each CLIENT
- QUALITY services on TIME and within BUDGET

We meet and exceed our client's expectations & sustain continued growth through repeat business.

**85% of our business comes from satisfied clients.**



*NFE Technologies, Inc. - Your Partner to Success*

# Breadth of Experience



- Military Facilities
- Housing, Parks, and Recreational Facilities
- Water/Wastewater , Utilities, Landfills, Superfund
- HTRW Contaminated Sites
- Prisons & Camps
- Transportation Systems- Highways, Bridges, Tunnels, Airports,
- Commercial Buildings & Offices
- Healthcare Facilities
- Industrial Plants
- Dams & Spillways
- Bus / Rail / Car / Transit Stations/ Terminals

*NFE Technologies, Inc. - Your Partner to Success*

# List of Federal Funded Projects



## AIRPORTS

- Raleigh/Durham International Airport renovations and remediation
- Philadelphia International Airport runway expansions and remediation
- National Airport expansions in Washington, DC
- Dulles International Airport in Washington DC
- Baltimore-Washington International Airport
- Regional Airports in Maryland and North Carolina

## INSTITUTIONS

- GENERAL SERVICES ADMINISTRATION - Nationwide contract on GSA Schedule.
- DEPARTMENT OF INTERIORS: National Park Facilities nationwide.
- FEDERAL PRISONS: Edgefield, South Carolina, Forrest City, Arkansas, Butner, North Carolina.
- VETERAN AFFAIRS: Hospital Additions in Durham, North Carolina
- NIEHS R&D: Facilities building remediation for National Institute of Environment Health Sciences in RTP, NC
- EPA: Research and Administrative Facilities new construction in RTP, NC
- US DEPARTMENT OF AGRICULTURE: National Agricultural Research Center in Maryland.
- RESOLUTE TRUST CORPORATION: Properties remediation in Raleigh and Greensboro, NC
- NASA: Goddard Space Flight Center in Greenbelt, Maryland
- U.S. POSTAL SERVICES: Open-end contract statewide in North Carolina

*NFE Technologies, Inc. - Your Partner to Success*

# List of Federal Funded Projects

---



## UTILITIES AND INFRASTRUCTURES

- WASHINGTON SUBURBAN SANITARY COMMISSION: Open-ended contracts
- WASHINGTON DC: Wastewater Treatment Plants improvements
- EPA's SUPERFUND: Project at Kellogg-Deering, Norwalk, CT. for NUS Corporation/E2Si

## TRANSPORTATION

- FEDERAL HIGHWAY ADMINISTRATION: Baltimore-Washington Parkway Pavement Rehab
- CENTRAL ARTERY TUNNEL: Construction at I-90/I-93 in Boston, MA
- WMATA: Washington Metro Transfer stations in Maryland, Virginia and Washington, DC
- VIRGINIA DEPARTMENT OF TRANSPORTATION: Open ended contracts statewide.
- MARYLAND HIGHWAY ADMINISTRATION: Statewide contracts.
- NORTH CAROLINA DEPARTMENT OF TRANSPORTATION: Open end contracts
- MASSACHUSETTS: Old Colony railroad rehabilitation in Boston, Massachusetts
- PENN SYLVANIA DEPARTMENT OF TRANSPORTATION: Design services.
- DELAWARE DEPARTMENT OF TRANSPORTATION.
- WASHINGTON DC: Road improvements and WWTPs.

## DEFENSE BASES

- PENTAGON HEADQUARTERS, Washington DC
- U.S. ARMY CORPS OF ENGINEERS Districts: Savannah, Wilmington, Norfolk, Baltimore, and Omaha.
- U.S. NAVY: LANTDIV Norfolk, Washington Navy Yard, Annapolis, Camp Lejeune, and Cherry Point.
- U.S. AIRFORCE: Bases in SC, NC, VA, and MD
- U.S. COAST GUARD: Elizabeth City, North Carolina

# Project Examples



- UNICOR Factory & Warehouse for Federal Bureau of Prisons at Butner, NC.
- Office & Shopping Center at 117 Cedar Fork Industrial Park - RTP, NC (75,000 sqft Facility)
- G-2 Technology Center - RTP, NC (10,000 sqft Facility)
- Blood and Cancer Center, GKC Enterprises, Inc. Youngstown, OH (15,000 SF Medical Facility)
- Infrastructures at Animal Husbandry Facility in University of Maryland
- The Village of Cornwallis – Group Housing Complex in Durham, NC
- Land development 60 acre Residential & Commercial property on Lumley Road in RTP, NC
- Healthcare Center for GKC Enterprises, Inc. - Youngstown, OH
- Construction of Utilities on Maryland State Highways in DC Metropolitan area
- Alta Season Apartment Complex - RTP, NC US Army Corps of
- Retail and Office Center renovations for Regency Realty Corp. in Durham, NC
- Public Schools expansions and renovations in MD and NC
- Site remedial services on AT&T property in Washington DC
- Environmental Remedial Systems at Fort Fisher Air Force Park Kurre Beach for US Army Corps of Engineers - Wilmington District
- Site remediation of Fleet Fuel Facility Parking Structure for NIEHS / EPA in RTP, NC
- US Army Corps of Engineers - Railroad repairs at Military Ocean Terminal, Sunny Point
- Gas Station improvements for Mr. Ram Farmah in Zebulon, NC
- Environmental remediation and site improvement at Kerr Lake Park Facility in Virginia for U.S. Army Corps of Engineers, Wilmington District

***NFE Technologies, Inc. - Your Partner to Success***

# Specialized Experience



- Pentagon Renovation Project in Arlington, Virginia (Washington DC).
- Adkins Branch at Kinston, NC – Flood control designs for US Army Wilmington
- Craney Island oily wastewater treatment plant at Portsmouth, Virginia for LANTDIV, Norfolk
- UXO / HTRW site at New River Marine Corps Air Station, Camp Lejeune, North Carolina
- Caledonia Prison Facility in North Carolina for NC Department of Corrections, Raleigh
- City of Fayetteville 5-years contract for Downtown rehabilitation
- Open-ended 3 years contract with US Army Corps of Engineers, Baltimore District
- New Right-of-ways along major road intersections within the city of Charlotte
- Chemical Plant in Wilmington, North Carolina for American Inspection and Audit
- RTC properties in Raleigh, Durham and Greensboro, North Carolina
- Old Housing properties in Durham for Spectrum Contracting.
- Juveniles dormitories at Dobbs School, Kinston for NC State Department of Youth Services
- NCDOT – field investigations for hazardous waste materials identification in Wilkes County
- Raleigh-Durham International Airport in North Carolina
- Fayetteville State University – Police & Public Safety building and student dormitories
- US Postal Facilities throughout the State of North Carolina
- Fort Fisher Air Force recreational park at Kurre Beach, North Carolina
- Wilmington COE – Environmental remediation services at Kerr Lake Recreational Facility, VA

*NFE Technologies, Inc. - Your Partner to Success*

# Specialized Experience

---



- Pope Air Force Base environmental services
- Donaldson Air Force Base site cleanup in South Carolina
- US Army Corps of Engineers – Letterkenny Army Depot in Pennsylvania
- WWGP Radio Station in Sanford, North Carolina for Federal Emergency Maintenance Authority
- WBT Radio Station in Charlotte, North Carolina for Federal Emergency Maintenance Authority
- Fleet Fuel facility for EPA and NIEHS at Research Triangle Park, North Carolina
- Cherry Hospital at Goldsboro, North Carolina – North Carolina Department of Health
- NC Department of Environment & Natural Resources – Statewide contract for LUST sites
- Old Landfill site at Fort Lee, Virginia – Baltimore Corps of Engineers
- City of Durham, NC Environmental Resource Division – site cleanup at Tire King facility
- City of Durham – Landfill expansion and closure on 125 acre site at East Club Boulevard
- Hickory Regional Airport expansions and Burn-pit closures in North Carolina
- School projects in North Carolina – Hoke County and Lenoir County
- Philadelphia International Airport – Runways widening and spill evaluations
- VDOT – Wetlands delineation and mitigation along Route 58 in Virginia
- Savannah COE – Sinkhole remediation along railroad tracks in Sunny Point, North Carolina
- Crown Central Petroleum stations in Baltimore and Richmond areas
- AT&T Properties in Washington DC

*NFE Technologies, Inc. - Your Partner to Success*

# Representative Clients



## Government

US Air Force  
US Army Corps of Engineers  
US Navy  
US Coast Guard  
US Department of Justice – Bureau of Prisons  
US Department of Interiors - Parks  
US Postal Service  
Federal Highway Administration & DOTs  
Federal Aviation Authority  
State Departments of Corrections  
State Department of Construction  
State Departments of Environment  
State University Systems  
EPA & NIEHS  
NASA  
General Services Administration  
Veterans Affairs Administration  
WMATA  
WSSC  
Municipalities & School Boards



GKC Professional Center  
Youngstown, OH



Blood and Cancer Center  
Youngstown, OH

## Private

3D/International  
Bechtel  
Black & Veatch  
CDM Federal  
CH2M Hill  
CSX Transportation  
Earthtech  
Ensafe  
Fluor Daniel  
Hazen & Sawyer  
HDR  
Heery International  
HNTB  
I.T / Shaw Group  
Jacob  
Kimley Horn  
Louis Berger  
MacTec / Law  
O'Brien & Gere  
Parsons Group  
PBS & J  
PBQD  
URS  
Weston  
Woolpert

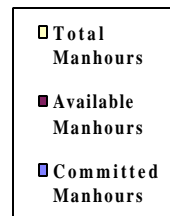
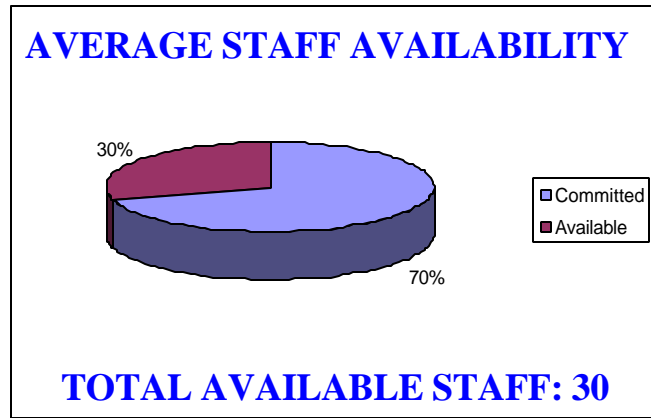
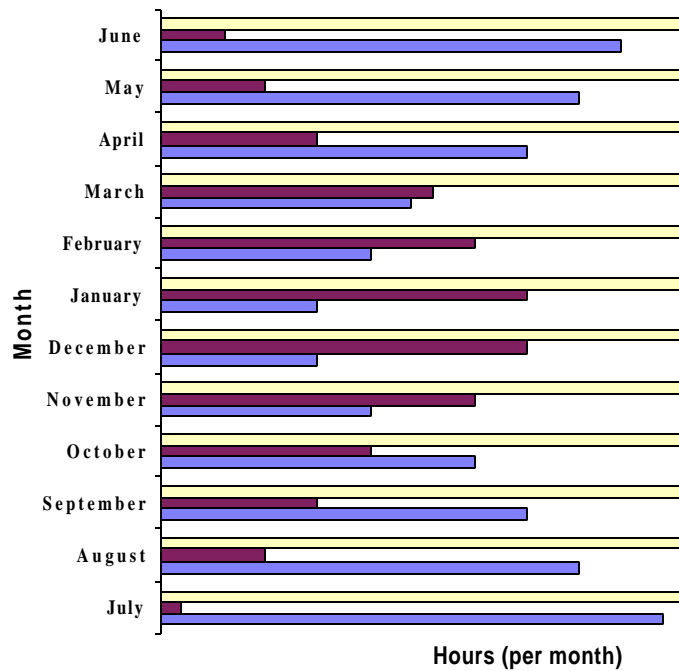
# Professional Qualifications & Competence of Team

*(Same project team will start and complete the job)*



Name	Position	Education	Certifications	Years of Experience	Area(s) of Expertise
Vinod K. Goel	Officer-in-Charge	BSCE, MSCE, PGDPM, Ph.D.	PE, NICET, GC, Environmental Specialist	20	Project Management, Project Engineering, Design & Construction
H. William Boyd	Chief Geologist & Environmental Scientist	BS, MS, Ph.D.	PG, OSHA, Asbestos Inspector, Air Quality	24	Project Management, QA/QC Control, Project Execution
Ron Crowson	Geophysicist & Environmental Manager	BS, MS, Ph.D.	PG	25	Project Management, Environmental Control
Michael Babu	Geological & Environmental Consultant	BS, MS, Ph.D.	PG, CPG	21	Geological & Environmental Studies & Designs
Basanta Sengupta	Civil Engineer, Construction Manager	BSCE, MSCE	TQM	40	Civil & Structural Design & Construction Administration
David Willmott	Geotechnical & Construction Engineer	BSCE	PE	20	Geotechnical & Construction Engineering Design
Vibha Goel	Cadd Specialist / Architect Intern	B. Arch., M.Arch.	ACI, CAD2000	14	Architectural and Engineering Support Design, Specification & Administration
Robert Dowd	Senior Construction Manager	BS, MS	PE	35	Project Management, Project Engineering, Design & Construction
Avram Gold	Health & Safety Advisor	BS, MS, Ph.D.	PE, CIH	24	Health & Safety Plans, Accident Prevention, Environmental Solutions
Robert Herrick	Environmental Engineer	BS, MS	PE, CIH	35	Industrial Hygiene, Environmental Engineering Study & Design
William Moore	Industrial Hygienist Laboratory Manager & CMT Supervisor	BS	Asbestos, Lead & Air Quality	35	Industrial Hygienist
Mark Boblett		BS	NICET, Troxler, ACI	15	Construction Inspection, Materials Testing
Min Hsu	Structural Engineer	BSCE, MSCE	PE	20	Civil & Structural Engineering Design, and Construction Inspection
Shri Kulkarni	Chief Chemist & QA/QC Advisor				Chemical Data Radiation, QA/QC, Analytical Work
Rob Liverman	Consultant Engineer	BS	PG	21	Geology, Environmental, Hyrdogeology
Alfred Free	Environmental Consultant	BSCE, MSEnv.E.	PE, CSP, LEP	22	Industrial Hygiene, Environmental Engineering Study & Design
Memory Washaya	Construction Engineer	BSCE	CQC	8	Civil & Structural Design & Construction Administration

# Capacity to accomplish the work in the required time



- In-house Field Equipment
- In-house Laboratories

- Quality Control Managers 2
- Project Managers 4
- Design Staff 12
- Construction Engineers 6
- Project Superintendent 2
- Contractors & Consultants
- Subcontractors – Specialty Items

# Past Performance



Name of Client	Project Completion	Quality of Work	Repeat Business	Letter of Commendation
US Army Corps of Engineers, Baltimore District	Ahead of Schedule	Excellent	4	YES
US Army Corps of Engineers, Wilmington District	On-Time	Excellent	7	YES
Federal Bureau of Prison	On-Time	Excellent	3	YES
North Carolina Department of Corrections (statewide)	On-Time	Excellent	3	YES
Virginia Department of Transportation (statewide)	Ahead of Schedule	Excellent	15	YES
North Carolina Department of Transportation (statewide)	Ahead of Schedule	Excellent	10	YES
City of Fayetteville & Fayetteville State University	Ahead of Schedule	Excellent	5	YES
City of Durham	Ahead of Schedule	Excellent	20	YES
City of Raleigh	Ahead of Schedule	Excellent	10	
US Navy, LANTDIV, Norfolk	Ahead of Schedule	Excellent	7	
National Institute of Environment & Health Sciences and EPA	Ahead of Schedule	Excellent	2	
US Postal Service	Ahead of Schedule	Excellent	6	



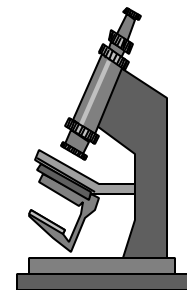
**See Sample Letters**

# QA / QC Program



## **Our Commitment to QC Plan:**

- For Quality Control: Single Point-of-contact:  
Dr. V. K. Goel, PE, Officer-in-charge: 919-818-7400 (Direct Line)
- For Project Management: Single Point-of-contact:  
Dr. H.W. Boyd, PG, Vice-President & Program Manager: 919-815-3144
  - Continuous communication & design quality improvement at each level
  - Calibration of all equipment at regular intervals
  - Strict adherence to project guidelines & Specifications
  - Internal Value Engineering by two professionals
  - Periodic site visits/spot checks by professionals
  - Parallel tests in the laboratory
  - Computerized calculations verified manually
  - Project staff resumes are pre-approved by the client



# Training and Certification



- Trained Professionals: PE, PG, CIH, CSP, GC, etc.
- Trained Field Crew:
  - Licensed Specialty Trade Contractor
  - OSHA Safety Training for HAZMAT and Construction Sites
  - Sediment and Erosion Control
  - Nuclear Gauge Safety Training
  - NICET/DOT Training for Materials Testing
  - First Aid and CPR Training
  - CPT Professionals and Operators
- Subsurface: Licensed Drillers & Geoprobe Specialists
- Specialty Training:
  - Asbestos and Lead-based Paint Inspection
  - X-Ray Fluorescent Metal Analysis
  - Rapid Site Assessment ASTM Protocol 11.04
  - DoD / SAME Training Seminars
  - Tank Testing
- US Army Corps Laboratory Accreditation



*NFE Technologies, Inc. - Your Partner to Success*

# Benefits of Choosing NFE

---



- Extensive Specialized Experience with Government Agencies
- Established working relation with Government & Top 500 Companies
- Highly Qualified Trained and Licensed Staff (average 15-35 yrs.)
- Extensively Descriptive Field Reports, Digital Photographs & Detailed Check-lists (To Avoid Future Claims)
- Prompt Responsiveness - 24 hours turnaround to all calls
- Ability to meet challenging schedules. Rapid procurements through **GSA Schedule** & BPAs.
- No Professional Liability Claims or Accidents in the Past 30 Years
- Innovative Approach- Cost Effective Solutions
- Successful 8(a), SDB & SB. Track Record- 85% Repeat Business
- Low Backlog--Immediate Availability

**We accept Credit Cards & Deliver ON-TIME & WITHIN BUDGET**

*NFE Technologies, Inc. - Your Partner to Success*